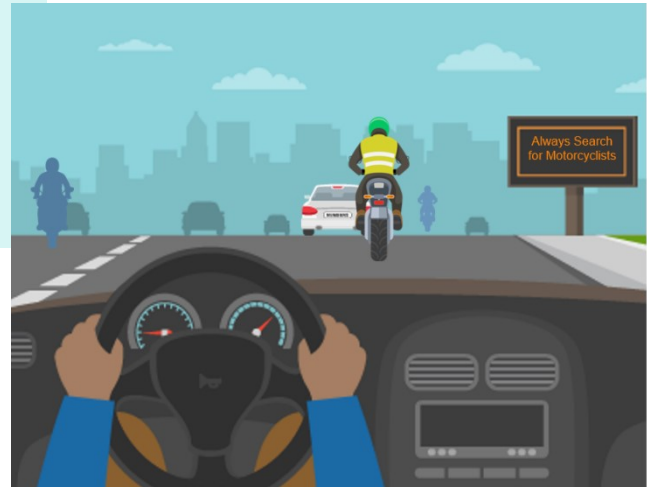




# Teen Driver Awareness Around Motorcyclists

**15 motorcyclists die in crashes every day**

Source: NHTSA Data Visualization Tool for Motorcycles



## WHY?

### FACTS!

- ✓ Smaller in size - more difficult to see
- ✓ Have very little protection
- ✓ More likely to get seriously injured in a crash
- ✓ May be more unstable because they are generally operating on two wheels
- ✓ Can be easily hidden in your blind spots
- ✓ Handle very differently than cars
- ✓ Have different acceleration and braking capabilities

## What can you do?

- › Expect to see motorcyclists
- › Leave space when passing motorcyclists
- › Stay in your lane, do not share a lane
- › Keep a greater following distance
- › Watch for turning motorcyclists
- › Thoroughly search for motorcyclists when turning, changing lanes and passing



**Motorcyclists are people with lives, loved ones, and futures!**